

PROTECTION CAPS FOR BIR, SERIES

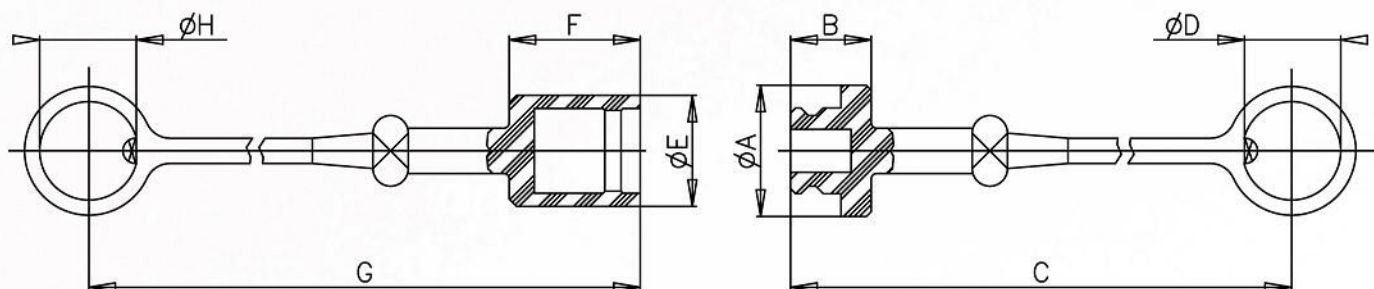
Protective caps are always recommended to protect the couplings from damage or dirt inclusion, and increase the product life. This is particularly important in mobile applications where contamination can enter the coupling and compromise the function. The caps for BIR, IR-V and IR series are manufactured in PVC rubber and they are available in several colors.



OVERALL DIMENSIONS PROTECTION CAPS FOR "BIR" SERIES

CAP FOR MALE COUPLING
Tappo per innesto maschio

CAP FOR FEMALE COUPLING
Tappo per innesto femmina



PVC CAPS

- Available in following colors: Red, yellow, blue, black and green.
- Temperature range: from -20 °C to +100 °C (from -4 °F to +212 °F).

| Description | Coupling | Unit | A | B | C | D | E | F | G | H | Unit | Weight |
|-------------|-------------------|------------|------------|------------|--------------|--------------|------------|------------|--------------|--------------|----------|---------------|
| T.M.B. 1/4 | F-BIR14 | mm Inch | 20 0,79 | 16 0,63 | 223 8,78 | 19,5 0,77 | - - | - - | - - | - - | Kg lb | 0,014 0,03 |
| T.F.B. 1/4 | M-BIR14 | mm Inch | - - | - - | - - | - - | 18 0,71 | 23 0,91 | 230 9,06 | 19,5 0,77 | Kg lb | 0,013 0,03 |
| T.M.B. 3/8 | F-BIR38 | mm Inch | 26 1,02 | 16 0,63 | 223 8,78 | 22,5 0,89 | - - | - - | - - | - - | Kg lb | 0,018 0,04 |
| T.F.B. 3/8 | M-BIR38 | mm Inch | - - | - - | - - | - - | 24 0,94 | 27 1,06 | 234 9,21 | 22,5 0,89 | Kg lb | 0,015 0,03 |
| T.M. 1/2 | F-BIR12 F-IR12 | mm Inch | 33 1,30 | 20 0,79 | 273 10,75 | 28 1,10 | - - | - - | - - | - - | Kg lb | 0,020 0,04 |
| T.F. 1/2 | M-BIR12 M-IR12 | mm Inch | - - | - - | - - | - - | 29 1,14 | 32 1,26 | 239 9,41 | 28 1,10 | Kg lb | 0,022 0,05 |
| T.M.B. 3/4 | F-BIR34 | mm Inch | 40 1,57 | 19 0,75 | 266 10,47 | 32 1,26 | - - | - - | - - | - - | Kg lb | 0,025 0,06 |
| T.F.B. 3/4 | M-BIR34 | mm Inch | - - | - - | - - | - - | 36 1,42 | 41 1,61 | 288 11,34 | 32 1,26 | Kg lb | 0,027 0,06 |
| T.M.B. 1 | F-BIR100 | mm Inch | 45 1,77 | 24 0,94 | 271 10,67 | 38 1,50 | - - | - - | - - | - - | Kg lb | 0,040 0,09 |
| T.F.B. 1 | M-BIR100 | mm Inch | - - | - - | - - | - - | 42 1,65 | 48 1,89 | 295 11,61 | 38 1,50 | Kg lb | 0,037 0,08 |

The texts, data and illustrations indicated in this catalogue, may be changed by Stucchi S.p.A at any time without notice. (CAT. BIR - EN - March 2008).